

Materialliste Schutzhaus 4 EWK

- 1x Bodenbrett (Seite 2)
- 4x Seitenbrett (Seite 3)
- 4x Deckelseite (Seite 4)
- 1x Deckelbrett (Seite 5)
- 4x Holzleiste Innen (Seite 6)
- 1x Dämmung Boden (Seite 7)
- 4x Dämmung Seite (Seite 8)
- 4x Dämmung Innen Dick (Seite 9)
- 4x Dämmung Innen Dünn (Seite 10)
- 1x Dämmung Deckel (Seite 11)
- 4x Anflugbrett (Seite 12)
- 4x Fluglochklappe (Seite 13)

H G F E D C B A

4

3

2

1

4

3


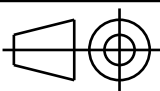
2

1

360

360

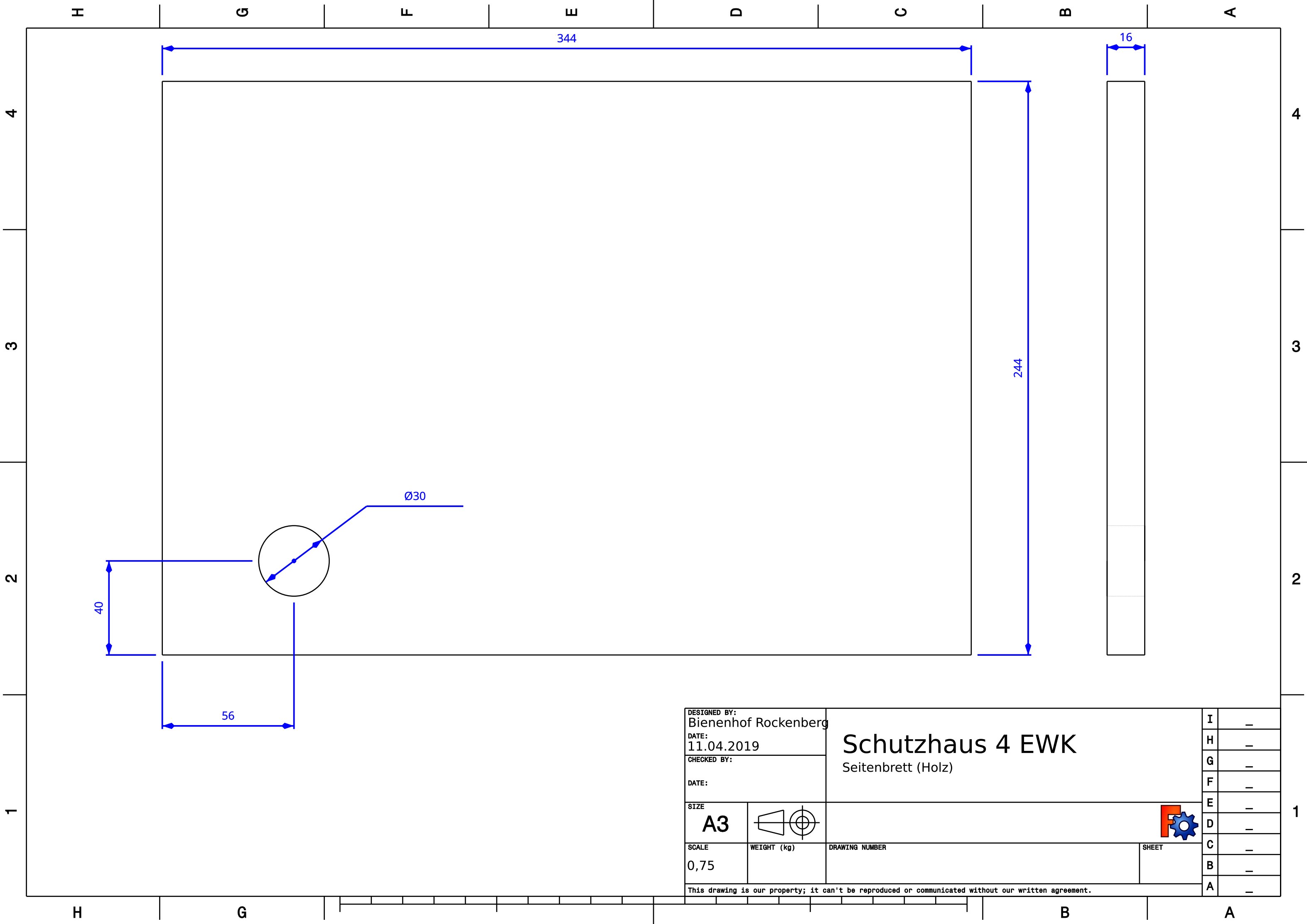
16

DESIGNED BY: Bienenhof Rockenberg		Schutzhaus 4 EWK Bodenbrett (Holz)
DATE: 09.04.2019		
CHECKED BY:		
DATE:		
SIZE A3		DRAWING NUMBER
SCALE 0,5	WEIGHT (kg)	
SHEET		

I	-
H	-
G	-
F	-
E	-
D	-
C	-
B	-
A	-

This drawing is our property; it can't be reproduced or communicated without our written agreement.

H G B A



DESIGNED BY: Bienenhof Rockenberg		<h1>Schutzhaus 4 EWK</h1> <p>Seitenbrett (Holz)</p>	I	-
DATE: 11.04.2019			H	-
CHECKED BY:			G	-
DATE:			F	-
SIZE A3			E	-
SCALE 0,75	WEIGHT (kg)		D	-
DRAWING NUMBER			C	-
SHEET			B	-
This drawing is our property; it can't be reproduced or communicated without our written agreement.			A	-

I	-
H	-
G	-
F	-
E	-
D	-
C	-
B	-
A	-

H G F E D C B A

4

4

3

3

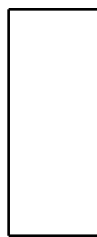
2

2

1

1

16



344



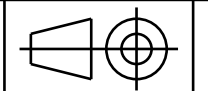
40



DESIGNED BY:
Bienenhof Rockenberg
DATE:
09.04.2019

CHECKED BY:
DATE:

SIZE
A3



Schutzhaus 4 EWK
Deckelseite (Holz)



SCALE
0,75

WEIGHT (kg)

DRAWING NUMBER

SHEET

I	-
H	-
G	-
F	-
E	-
D	-
C	-
B	-
A	-

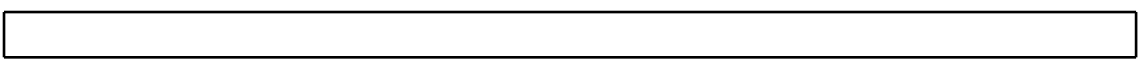
This drawing is our property; it can't be reproduced or communicated without our written agreement.

H G B A

H G F E D C B A

4

4

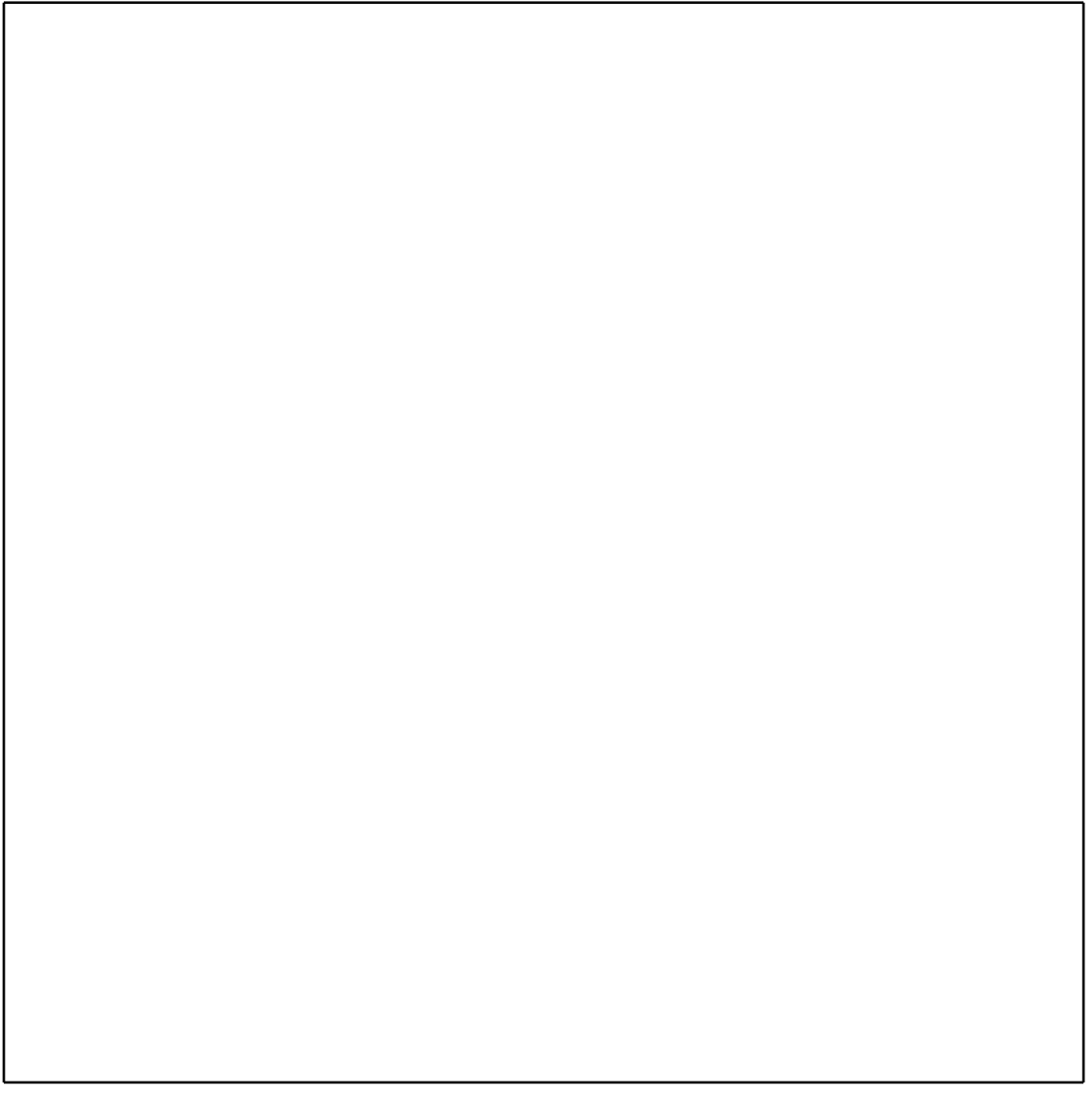


16

400



400



3

3


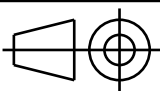
2

2

1

1

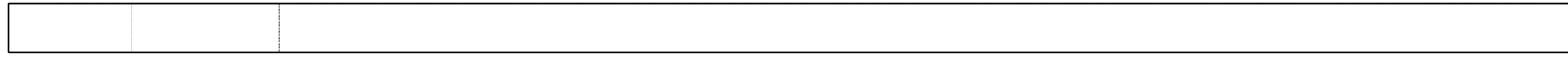
H G F E D C B A

DESIGNED BY: Bienenhof Rockenberg		<h1>Schutzhaus 4 EWK</h1> Deckel (Holz)		I	-
DATE: 09.04.2019				H	-
CHECKED BY:				G	-
DATE:				F	-
SIZE A3				E	-
SCALE 0,375	WEIGHT (kg)	DRAWING NUMBER	SHEET	D	-
This drawing is our property; it can't be reproduced or communicated without our written agreement.				C	-
				B	-
				A	-

H G F E D C B A

4

4



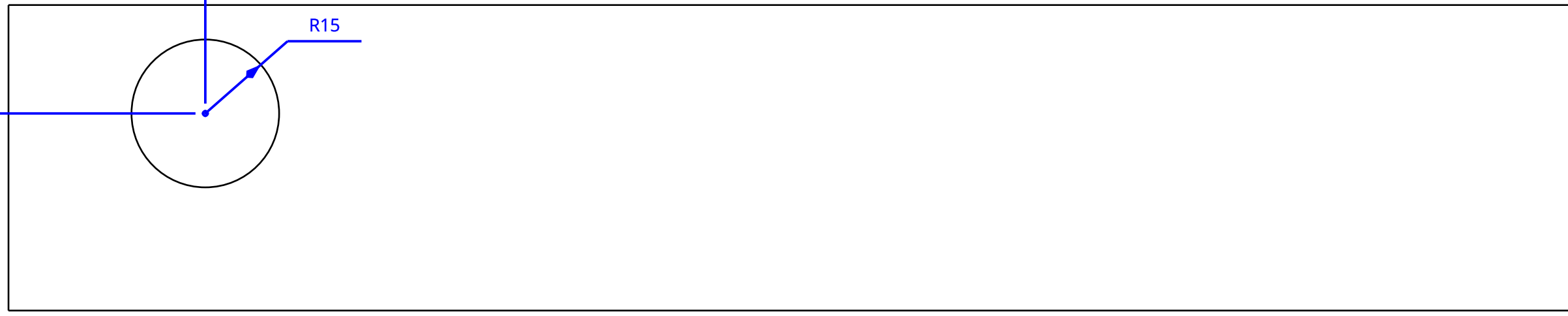
10

3

3



40



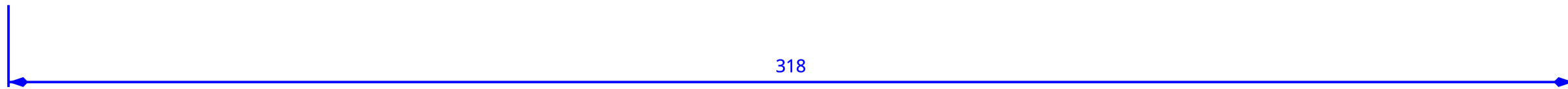
R15

62

40

2

2



318

1

1

DESIGNED BY: Bienenhof Rockenberg		<h1>Schutzhaus 4 EWK</h1> <p>Holzleiste innen</p>		I	-
DATE: 09.04.2019				H	-
CHECKED BY:				G	-
DATE:				F	-
SIZE A3				E	-
SCALE	WEIGHT (kg)			D	-
		DRAWING NUMBER		C	-
		SHEET		B	-
This drawing is our property; it can't be reproduced or communicated without our written agreement.				A	-

H G B A

H G F E D C B A

4

3

2

1

4

3

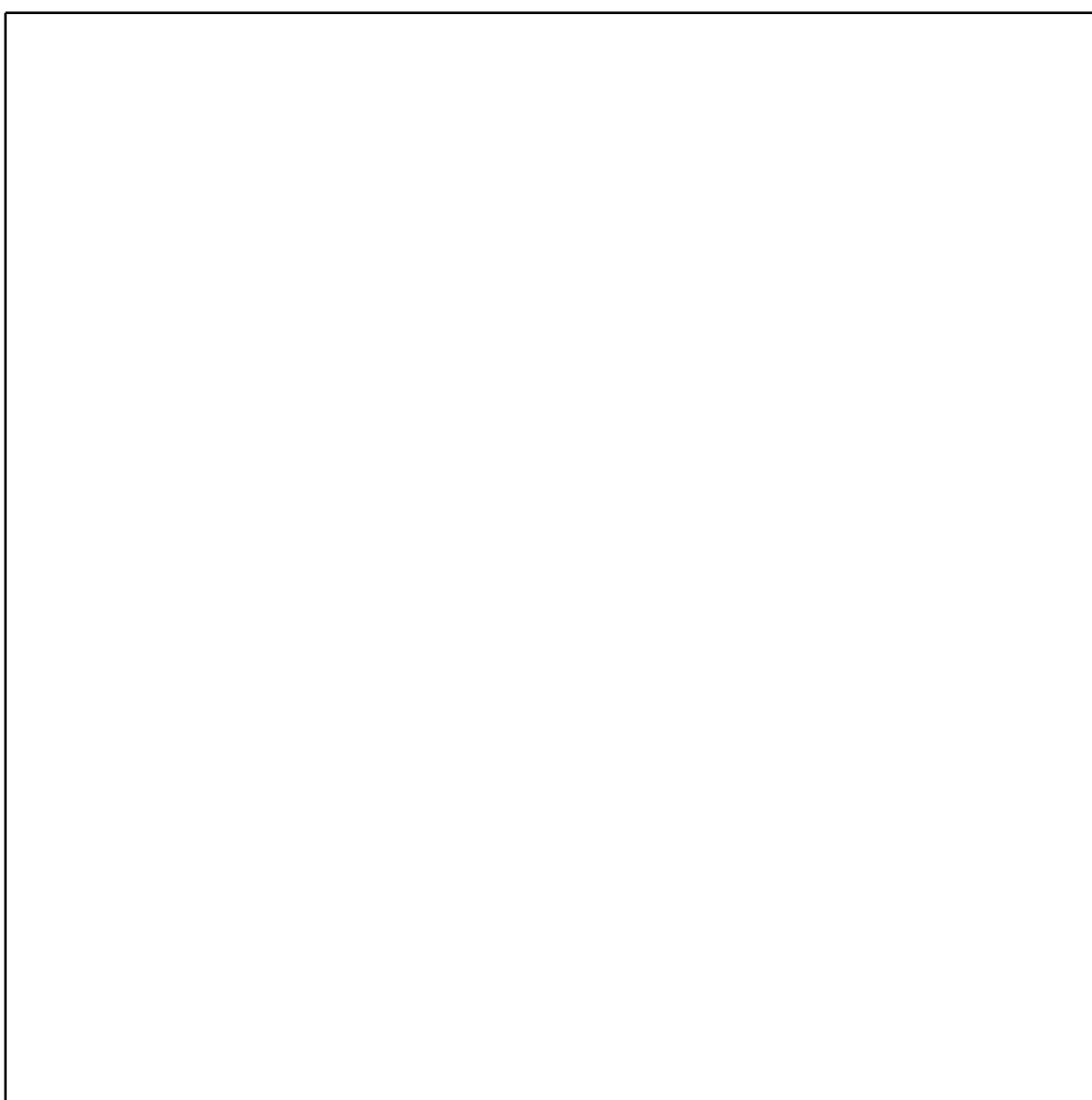
2

1

307

307

22



DESIGNED BY:

Bienenhof Rockenberg

DATE:

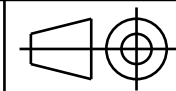
04.09.2019

CHECKED BY:

DATE:

SIZE

A3



SCALE

0,5

WEIGHT (kg)

DRAWING NUMBER

SHEET

Schutzhaus 4 EWK

Dämmung Boden (Holzfaserplatte)



I	-
H	-
G	-
F	-
E	-
D	-
C	-
B	-
A	-

This drawing is our property; it can't be reproduced or communicated without our written agreement.

H G B A

H G F E D C B A

318

10

182

4

4

3

3

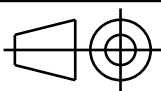

2

2

1

1

H G B A

DESIGNED BY: Bienenhof Rockenberg		<h1>Schutzhaus 4 EWK</h1> <p>Dämmung Seite (Holzfaserplatte)</p>		I	-
DATE: 09.04.2019				H	-
CHECKED BY:				G	-
DATE:				F	-
SIZE A3				E	-
SCALE	WEIGHT (kg)			D	-
		DRAWING NUMBER	SHEET	C	-
				B	-
This drawing is our property; it can't be reproduced or communicated without our written agreement.				A	-

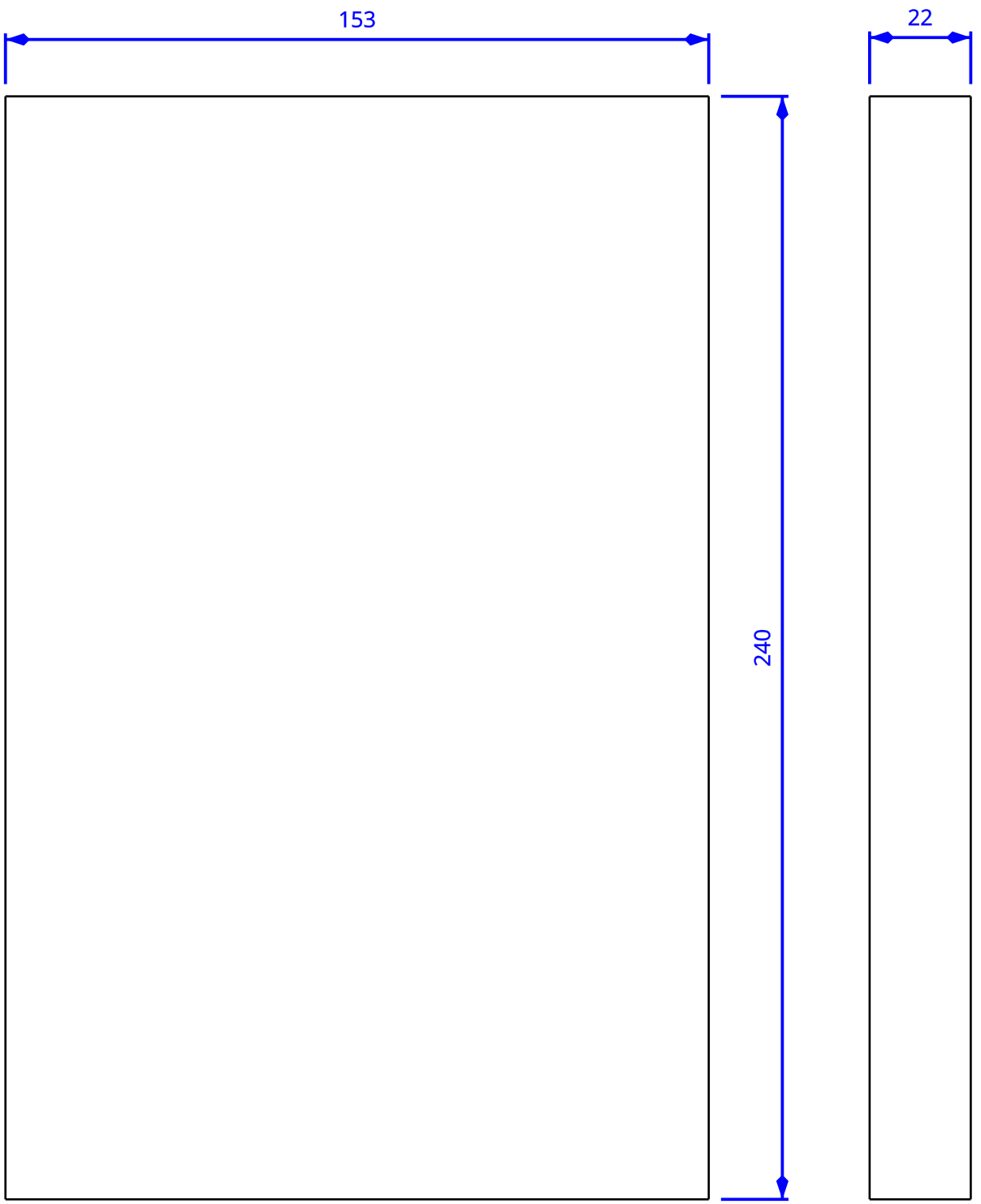
H G F E D C B A

4

3

2

1


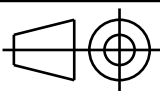


4

3

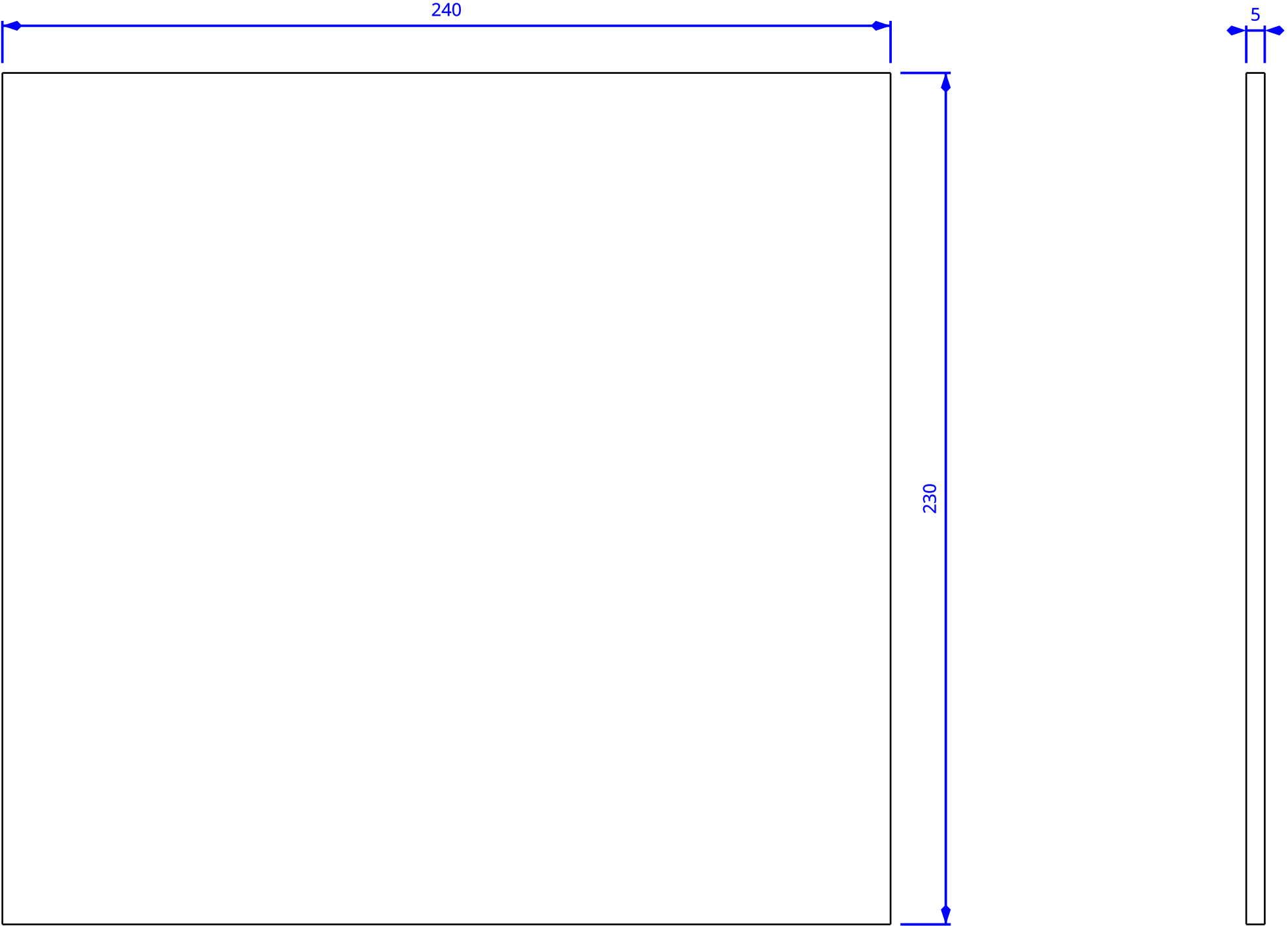
2

1

DESIGNED BY: Bienenhof Rockenberg		<h1>Schutzhaus 4 EWK</h1> <p>Dämmung Innen Dick (Holzfaserplatte)</p>	I	-
DATE: 09.04.2019			H	-
CHECKED BY:			G	-
DATE:			F	-
SIZE A3			E	-
SCALE 0,75	WEIGHT (kg)		D	-
DRAWING NUMBER			C	-
			B	-
SHEET			A	-
This drawing is our property; it can't be reproduced or communicated without our written agreement.				

H G B A

H G F E D C B A



4
3
2
1

4
3
2
1

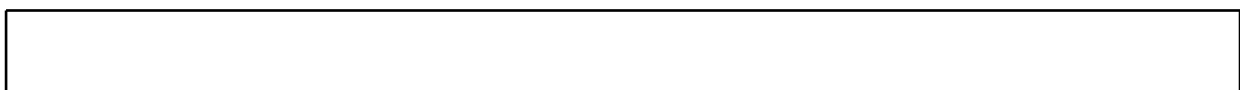
DESIGNED BY: Bienenhof Rockenberg		<h1>Schutzhaus 4 EWK</h1> <p>Dämmung Innen Dünn</p>		I	-
DATE: 09.04.2019				H	-
CHECKED BY:				G	-
DATE:				F	-
SIZE A3				E	-
SCALE 0,75	WEIGHT (kg)			D	-
	DRAWING NUMBER	SHEET		C	-
				B	-
This drawing is our property; it can't be reproduced or communicated without our written agreement.				A	-

H G B A

H G F E D C B A

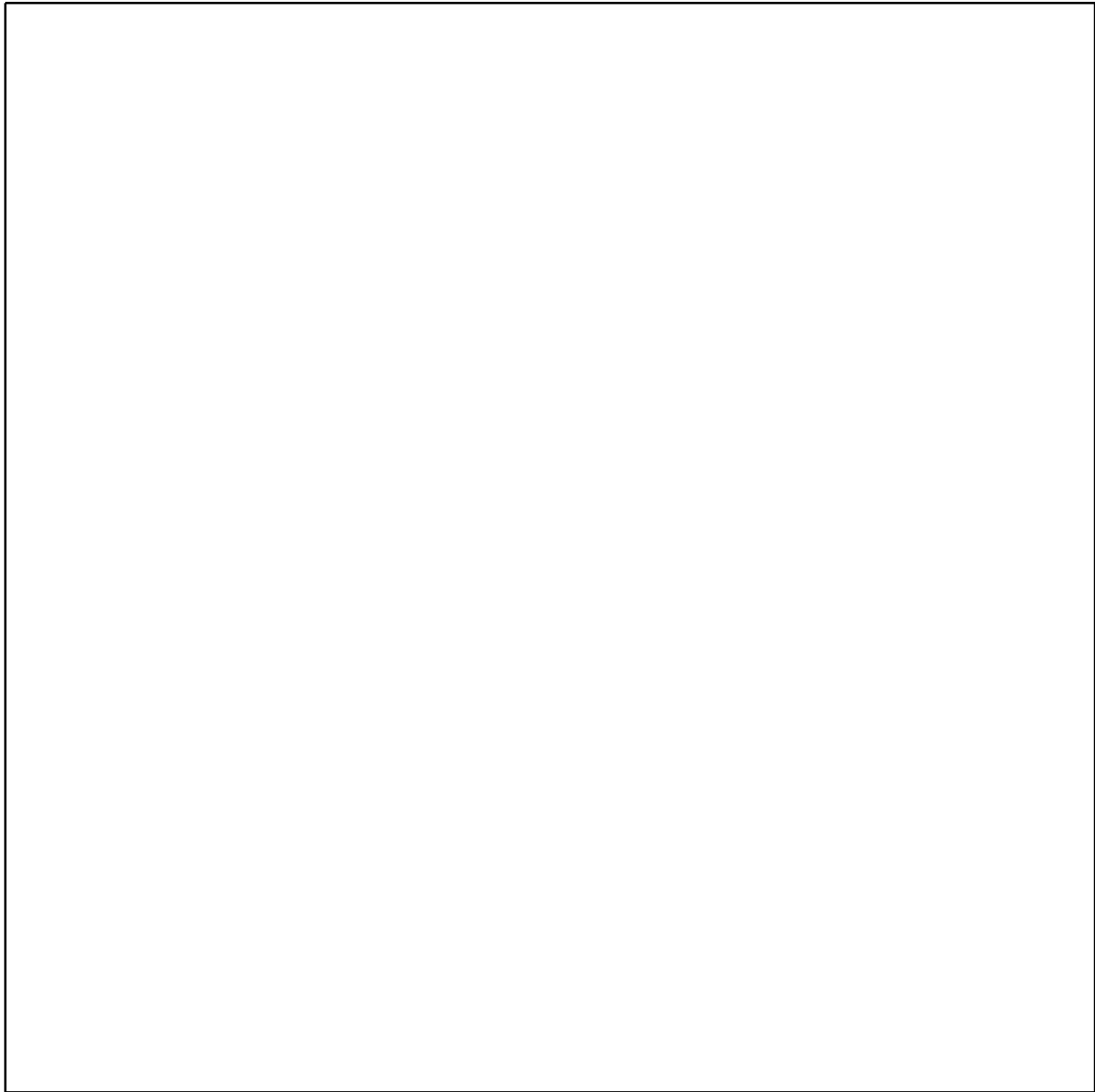
4

4

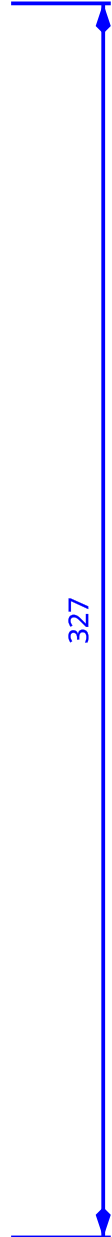


22

327



327



3

3

2

2

1

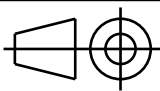
1

DESIGNED BY:
Bienenhof Rockenberg
DATE:
09.04.2019

CHECKED BY:
DATE:

Schutzhaus 4 EWK
Dämmung Deckel (Holzfaserplatte)

SIZE
A3



SCALE
0,5

WEIGHT (kg)

DRAWING NUMBER

SHEET

I	-
H	-
G	-
F	-
E	-
D	-
C	-
B	-
A	-

This drawing is our property; it can't be reproduced or communicated without our written agreement.

H G B A

H G F E D C B A

4

4

3

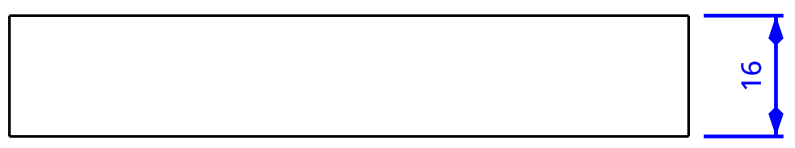
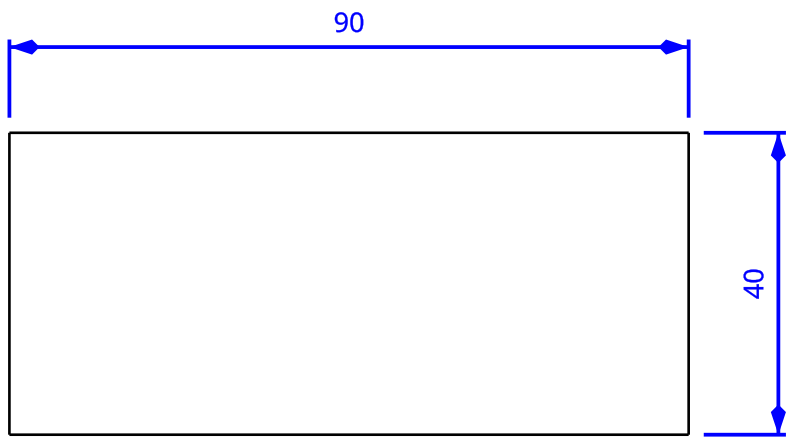
3


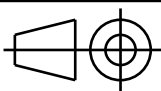
2

2

1

1



DESIGNED BY: Bienenhof Rockenberg		<h1>Schutzhaus 4 EWK</h1> Anflugbrett (Holz)		I	-
DATE: 09.04.2019				H	-
CHECKED BY:				G	-
DATE:				F	-
SIZE A3		DRAWING NUMBER		E	-
SCALE	WEIGHT (kg)			D	-
		SHEET		C	-
				B	-
This drawing is our property; it can't be reproduced or communicated without our written agreement.				A	-

H G B A

H G F E D C B A

4

4

3

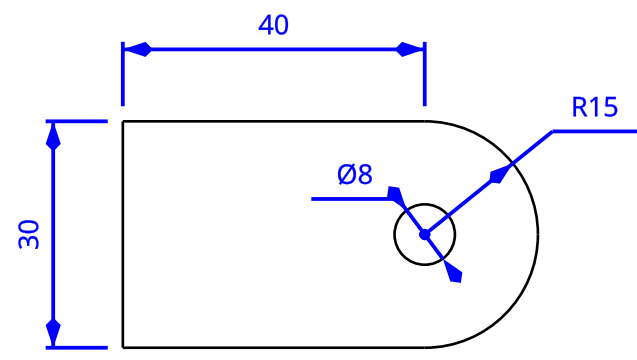
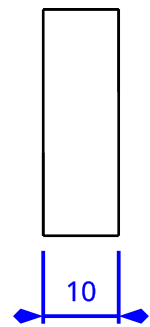
3

2

2

1

1



DESIGNED BY: Bienenhof Rockenberg		<h1>Schutzhaus 4 EWK</h1> <p>Fluglochklappe (Holz)</p>
DATE: 09.04.2019		
CHECKED BY:		
DATE:		
SIZE A3		
SCALE	WEIGHT (kg)	DRAWING NUMBER
		SHEET

I	-
H	-
G	-
F	-
E	-
D	-
C	-
B	-
A	-

This drawing is our property; it can't be reproduced or communicated without our written agreement.

H G B A